

EXISTING CONDITIONS.
Contractor must visit the
site and familiarize with
existing conditions prior to
bidding. There is work
involved in areas outside
the space. Contractor shall
coordinate such work,
minimize disruptions and
bring those areas to the
same condition it was prior
to the work was performed.

This item has been digitally
signed and sealed by
Alejandro Ramirez, PE on:
see seal date Printed
copies of this document
are not considered signed
and sealed and the
signature must be verified
on any electronic copies.
Alejandro Ramirez, PE 52742

No.	Description	Date

Proposed
Mausoleum
Building
At

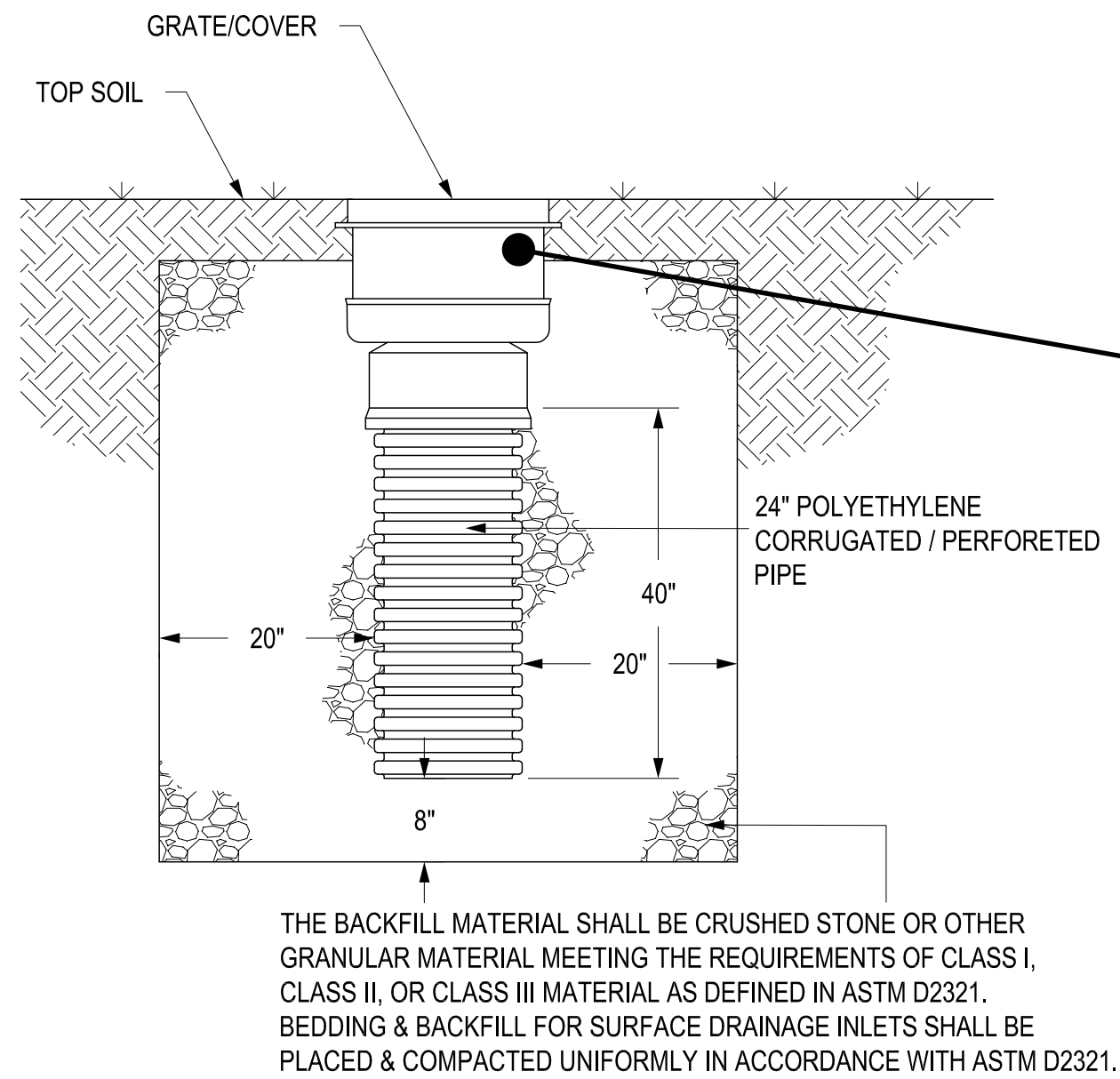
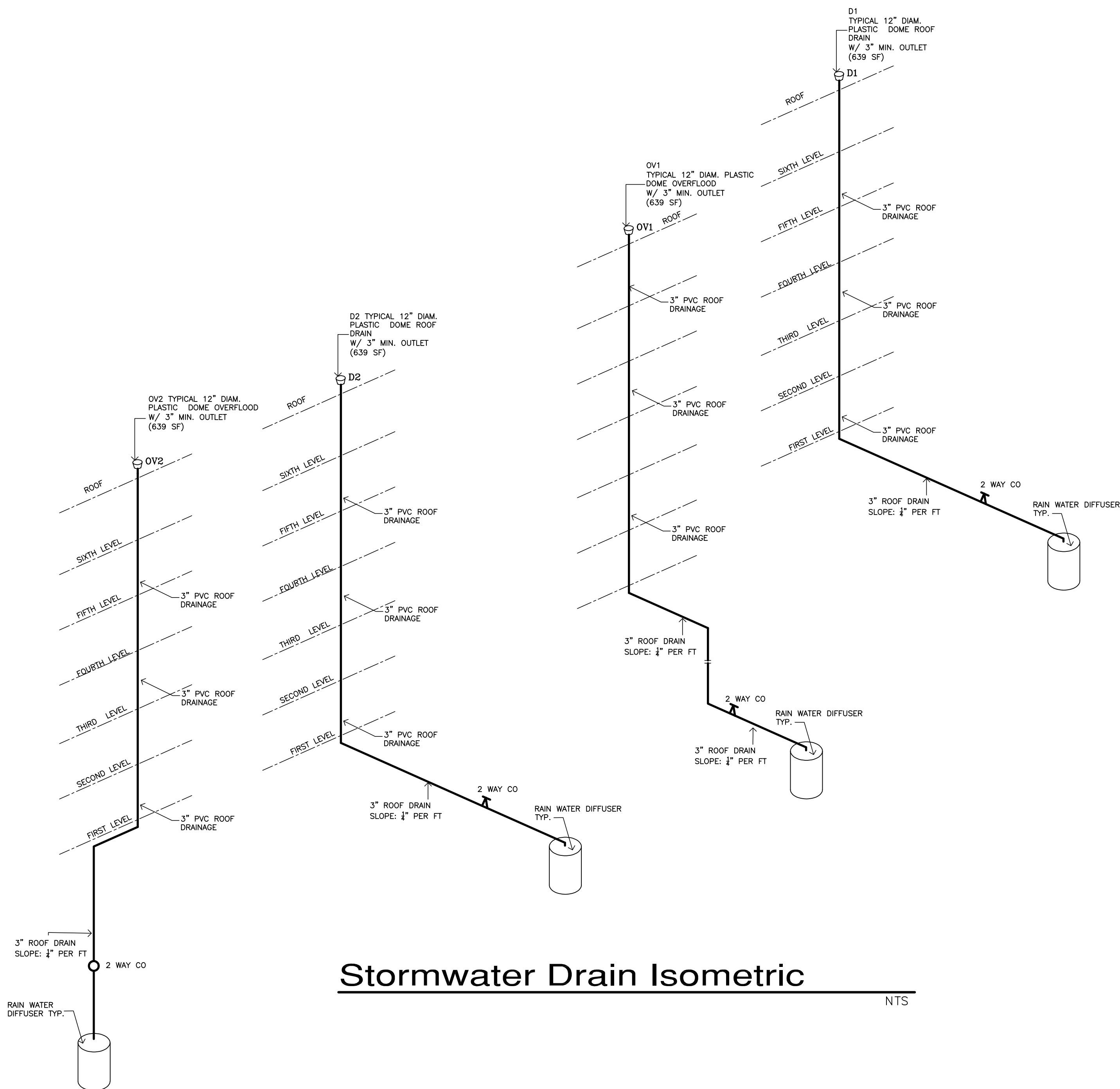
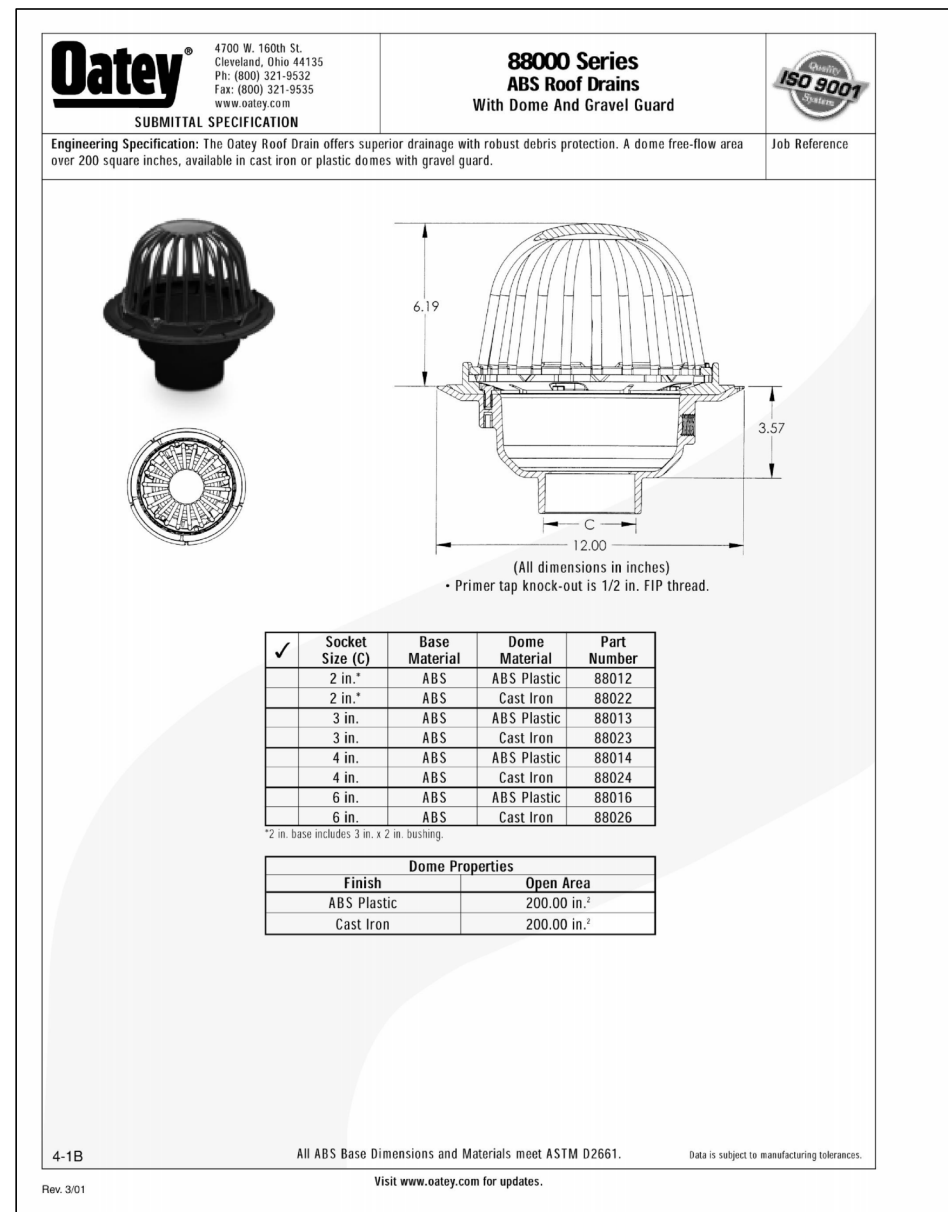
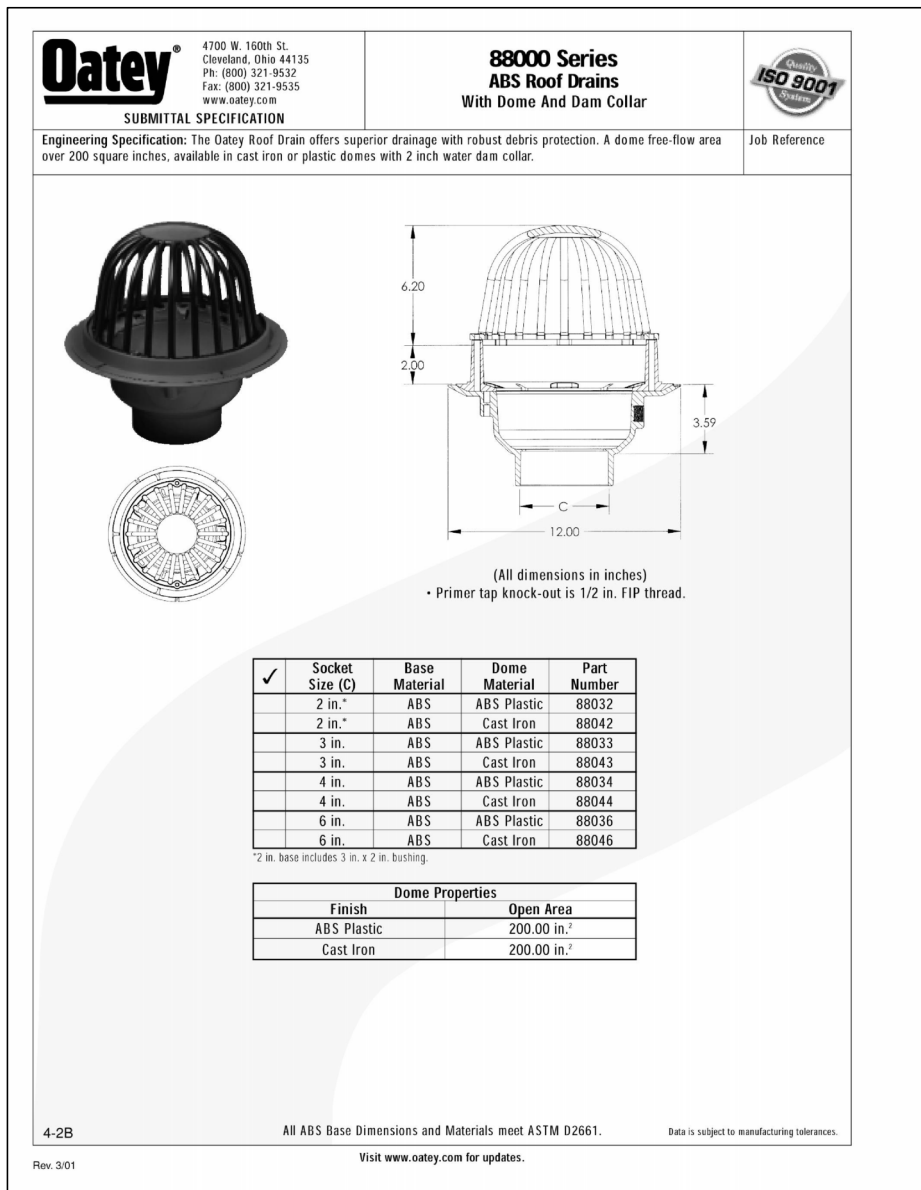
Forest Lawn
Memorial
Gardens

200 WEST COPANS ROAD
POMPANO BEACH
FLORIDA

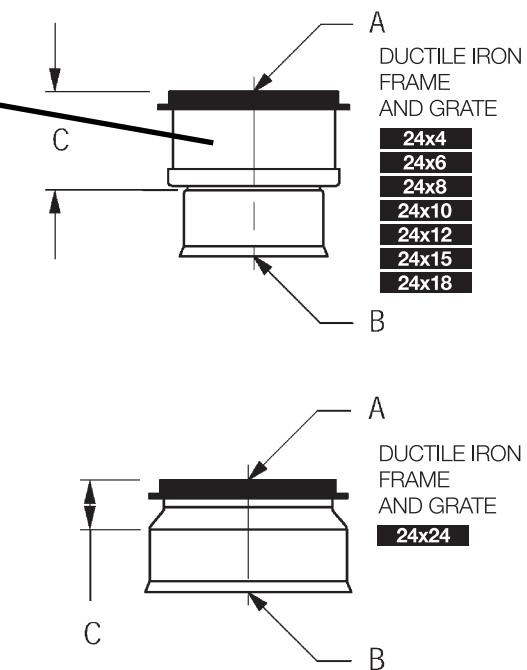
Project number 2024-05
Date December 14, 2024

P-2

Scale 1/4"=1'-0"

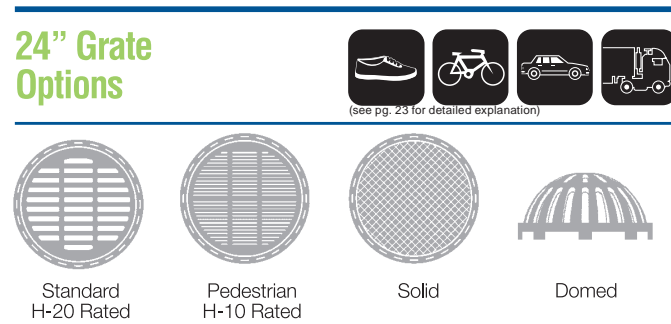


Part#/Prefix	Product Description	Available Outlets
2724AG...X	24" Inline Drain	4" thru 24"



A	B	C
24"	4"	15.00"
24"	6"	15.00"
24"	8"	15.00"
24"	10"	15.00"
24"	12"	15.00"
24"	15"	15.00"
24"	18"	10.00"
24"	24"	10.25"

RAIN WATER DIFFUSER
SCALE: N.T.S.



Grate Specifications for Inline Drains and Drain Basins			
8"		Inlet Area Standard: 20.3 sq. in. Domed style: N/A	Slot Size (Min.) 0.51" N/A
10"		Inlet Area Standard: 29.7 sq. in. Domed style: N/A	Slot Size (Min.) 0.43" N/A
12" & 15"		Inlet Area Standard H-20 Rated: 12": 62.7 sq. in. 15": 92.5 sq. in. Pedestrian H-10 Rated: 12": 51.0 sq. in. 15": 79.3 sq. in. (12" and 15" grates are square and hinged to base.)	Slot Size (Min.) 1.13" 1.13" .375" .375"



DRC

PZ25-1200004

04.02.2023